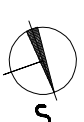




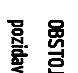

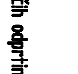


ORIENTACIJA:



TLAK V PRITLIČJU:

±0,00 = 223.70 m.n.m.v

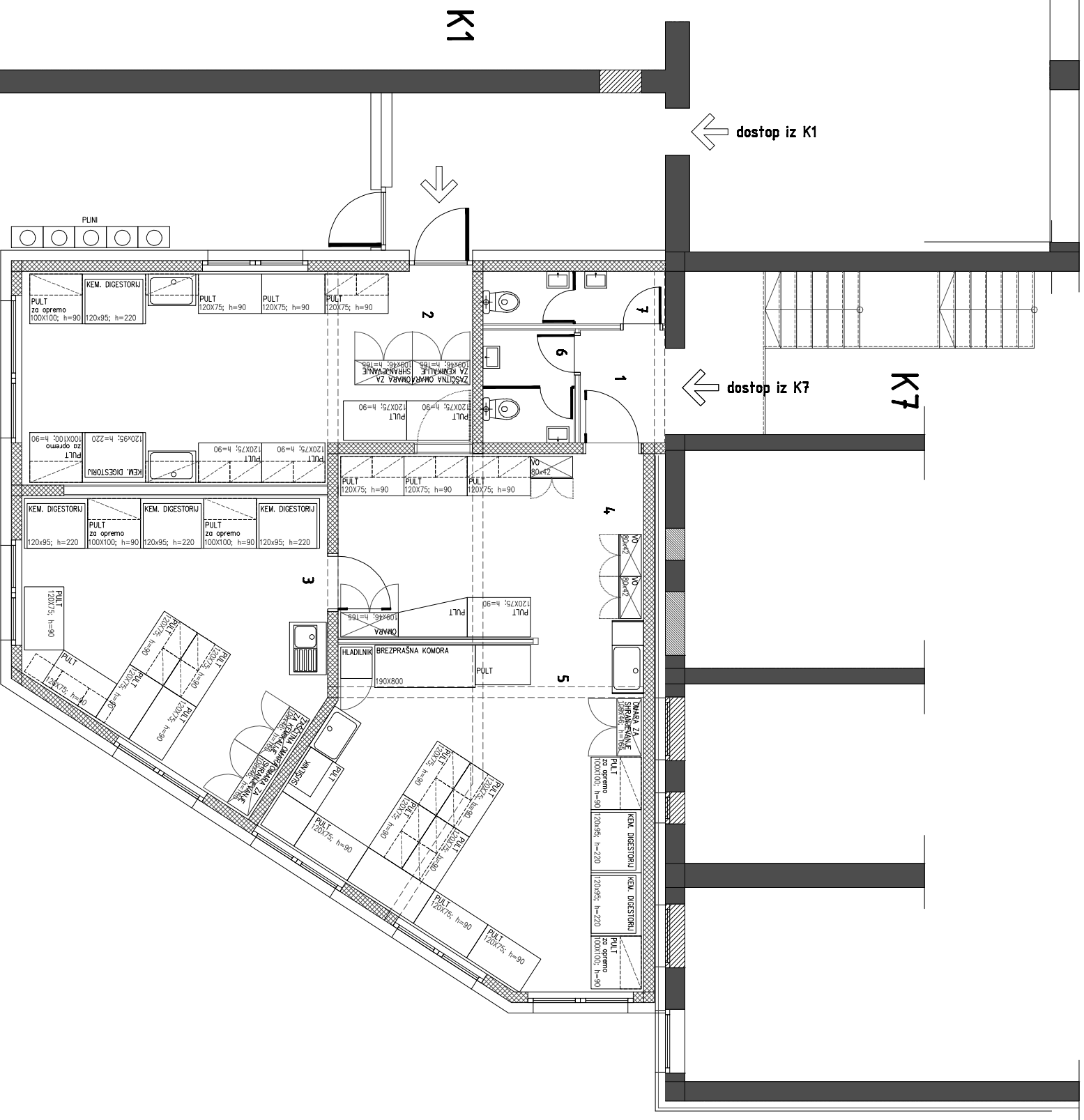
LEGENDA:

	OBSTOJEČE
	pozideva obstoječih odprtih
	NOVO
	AB - armiran beton
	AB - armiran beton
	predelna stena 12,5 cm
	fasada

OPIS PROSTOROV:

prostor	kota tal obloga	talna obloga	površina
1	-0,30	keramika	2,45 m ²
2	-0,30	keramika	34,71 m ²
3	-0,30	parket	27,92 m ²
4	-0,30	parket	18,10 m ²
5	-0,30	parket	37,23 m ²
6	-0,32	parket	3,70 m ²
7	-0,32	parket	3,15 m ²

PRTLJIČJE SKUPAJ 127,26 m²
ZAZIDANA POVRŠINA 14,2,60 m²



Naziv objekta: PRIZIDEK OBJEKTU K7

Ljubljana, kompleks IJS

PRIZIDAVA

Naročnik-investitor: INSTITUTEV "Jožef Štefan"

Jamova cesta 39
1000 LJUBLJANA

Vrsta projekta: IDZ Št. projekta: 64/11

Vrsta načrta: NAČRT ARHITEKTURE

Datum: oktober 2011

Projektant: **ARNOME**

MATEJ ŠTOR S.P.,
NA TRATAH 11, 8000 NOVO MESTO

Odg. vodja projekta: MATEJ ŠTOR, u.d.a., ZAPS 1165 A

Odg. projektant: MATEJ ŠTOR, u.d.a., ZAPS 1165 A

Vsebinska risba: TLORIS PRITLIČJA

(varianta 4 - 14.10.2011)

Merilo: 1:100 Št.risbe: 5.3